

There is no equal when it comes to ergonomic office seating.



> Patented dual density posture support system designed to suit every body.

# Gregory Slimline

An Extremely Comfortable And Reliable Ergonomic Solution To Office Seating With Patented Dual Density Posture Support System

GREGORY  
*ergonomic to the core*



## Adjusts to suit your body with the highest OH&S standards and improve performance and overall well-being

Manufactured in Australia, Gregory chairs are recognised by ergonomists, the medical and OH&S professionals as providing the best possible seating solution for the modern office and an extremely high level of comfort. Many of Australia's top 100 companies now use Gregory either as their primary office chair or as an aid for staff with back or work related injuries.

Based on results of ergonomic evaluation the Slimline range of chairs have proven to be superior in reducing OH&S risks, looking after employee well-being while providing exceptional comfort.

### Ergo-Eco Logical™

At Gregory ergonomics is important, so is the environment. We are committed to the continual improvement of our manufacturing processes to ensure the benefits of sustainable design cover all aspects of the product lifecycle; from product selection, to production methods, reduction of waste and the reuse of components at the end of their life span. Gregory is a member of the Green Building Council of Australia.



AB3511FA  
Extra high back executive with arms  
synchronised mechanism and aluminium base

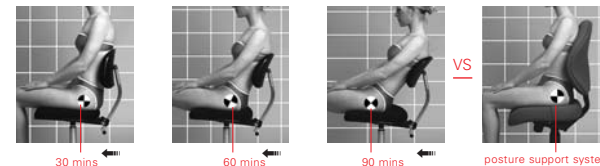
1. Patented dual density posture support system
2. Pronounced lumbar support
3. Height adjustable back
4. Contoured seat and waterfall edge
5. Height adjustable arms
6. Choice of bases

- Full ergonomic adjustability for seat height, seat and back tilt
- Arm height can be quickly adapted to suit each individual's specific needs
- Small, standard and large seat options
- Heavy duty kit to support up to 160 kgs available on large seat manager and extra high back executive chairs

### Patented dual density posture support system

The seat features two different densities of moulded foam - softer in the back section and firmer in the front - indicated by the split.

The pelvis gently 'sinks' and is supported in the softer section in the correct seating position at the back of the chair. Firmer foam at the front discourages the pelvis from sliding forward into the slouching "C" curve of poor posture. The moulded (or shaped) foam also encourages and improves blood circulation behind the thighs. With the added adjustable lumbar support the spine is maintained in the healthy, upright "S" curve of good posture which also creates less stress on the arms, shoulders and neck throughout the day.

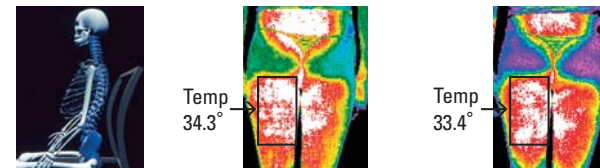


Ordinary chair allows "C" curve of poor posture

Gregory chair

### Scientific evaluation

Gregory uses scientific evaluation in the testing of its products. Thermographs show surface temperatures and indicate the difference in blood flow in the body after sitting over a period of time in a Gregory chair compared to an ordinary chair. Surface temperature is a function of the heat imparted by the body's circulation system. This means that warmer temperatures on the body's surface shows greater blood flow in the measured area. Small changes in surface temperature indicate larger changes in the deeper tissues. White areas show increased blood flow.



Healthy 'S' curve where head is properly balanced on top of the spine

Gregory chair  
Higher surface temperature indicate larger changes in deep tissues and greater blood flow

Ordinary chair  
Lower surface temperature indicate lesser blood flow and less comfort

Thermographic images produced by Thermal Imaging Services Pty Limited February 2005

## Slimline range - ergonomic to the core

In today's office there is a great diversity of people sitting at the computer, on the phone and in conference. Slimline is a comprehensive family of chairs that offers a superior level of comfort and support to everyone, regardless of status or task. Designed to meet Australian standards for strength, durability and stability these chairs feature the essential adjustments for back angle and seat tilt, independent seat and back height plus free float to ensure a great ergonomic fit. Some models are available with an advanced synchronised mechanism and seat slide to provide automatic ergonomic adjustment to follow the natural flow of movement of the body.

The most popular clerical, manager and executive models are tested to AFRDI level 6. Fully upholstered backrest. Slimline is available in your choice of fabric, leather or medical/hospital vinyl coverings.



AB1200CA  
Medium back clerical

AB1210CA  
Medium back clerical with arms

AB1201CA  
Large seat medium back clerical

AB1211CA  
Large seat medium back clerical with arms



AB1300CA  
High back manager

AB1301CA  
Large seat high back manager

AB1311CA  
Large seat high back manager with arms

AB3511FA  
Extra high back executive with arms



- › The standard by which all others are measured
- › Product design excellence and exceptional ergonomic performance

- › Small standard or large seat options
- › Also available with seat slide/synchro mechanism
- › Can be fitted with heavy duty kit to support up to 160 kgs

# IMPROVE COMFORT, PREVENT INJURY

GREGORY  
ergonomic to the core



# GREGORY SLIMLINE

Providing the superior seating solution for the modern office

Standard 3 Lever Mechanism	Synchronised Mechanism Chair Code	Synchro with Seat Slide (Not AFRDI Rated)	Description	Arms	AFRDI	Seat Width	Seat Depth	Width B/N Arms	Seat Height Range	Back Height Range
<b>Clerical</b>										
AB1202CA	-	-	Small seat medium back	No arms	-	455	460	-	460-575	420-490
AB1212CA	-	-	Small seat medium back	Adj D-arms	-	455	460	475	460-575	420-490
AB1200CA	AB1200FA	AB1200FF	Medium back	No arms	6	480	500	-	460-575	420-490
AB1210CA	AB1210FA	AB1210FF	Medium back	Adj D-arms	6	480	500	475	460-575	420-490
AB1201CA	AB1201FA	-	Large seat medium back	No arms	6	520	525	-	470-585	425-495
AB1211CA	AB1211FA	-	Large seat medium back	Adj D-arms	6	520	525	510	470-585	425-495
<b>Manager</b>										
AB1300CA	AB1300FA	AB1300FF	High back	No arms	6	480	500	-	450-570	515-580
AB1310CA	AB1310FA	AB1310FF	High back	Adj D-arms	6	480	500	475	450-570	515-580
AB1340CA	AB1340FA	AB1340FF	High back	Deluxe arms	-	480	500	530	450-570	515-580
AB1301CA	AB1301FA	-	Large seat high back	No arms	6	520	525	-	470-585	525-605
AB1311CA	AB1311FA	-	Large seat high back	Adj D-arms	6	520	525	510	470-585	525-605
AB1341CA	AB1341FA	-	Large seat high back	Deluxe arms	-	520	525	545	470-585	525-605
<b>Executive</b>										
-	AB3501FA	-	Extra High back	No arms	-	545	470	-	485-565	685-750
-	AB3511FA	-	Extra High back	Adj D-arms	-	545	470	520	485-565	685-750
-	AB3541FA	-	Extra High back	Deluxe Arms	-	545	470	575	485-565	685-750
<b>Visitor</b>										
AB0200HA	-	-	Medium back	No arms	-	475	505	-	500	465
AB0210HA	-	-	Medium back	Adj D-arms	-	475	505	465	500	465



Height adjustable D-arms



Ergonomic adjustments



Deluxe arms



Aluminium base



## Options

- Height adjustable D-arms to permit close work at a desk
- Large seat manager/extra high back manager chairs can be fitted with a heavy-duty kit for heavy duty use to support up to 160 kgs
- Deluxe arms on manager and executive models
- Standard 3 lever, synchronised or synchro with seat slide mechanism
- Aluminium base
- Soft tyred castors for hard floor surfaces
- Glides for use where no movement is required



5 Year Warranty on parts and workmanship (excluding fabric). Our policy of continual development may require minor changes to product dimensions and specifications without notice.

Gregory Commercial Furniture Pty Limited ABN 77 120 112 969  
125-131 Cowpasture Road Wetherill Park NSW 2164 Australia  
E. sales@gregoryaustralia.com.au

Call: 13 ERGO (13 3746) or visit [www.gregoryaustralia.com.au](http://www.gregoryaustralia.com.au)

**GREGORY**  
ergonomic to the core

