

Environmental thinking

We are working towards our ISO 14000 Certification and are conscious of the impact we are making. It starts at the design stage. Reuse, reconfiguration and recycling are always top of mind. We have moved to water based glues and are working on an upholstery process which **completely eliminates the need for glues.**

Our plastic chair bases contain up to **40% recycled material** and old bases are **reground and recycled.** All steel and aluminium components are **100% recycled** via commercial recycling outlets. We even encourage our customers to recycle obsolete furniture and can arrange a recycling service for them.

Zero emission is another objective at Gregory. All foam products used are manufactured CFC free. Powder coatings used are E=0. In other words, zero emission with no volatile organic compounds released into the atmosphere.

We have two long-term aims: to minimise environmental impact during the manufacturing process, and create a product that virtually “disappears” at the end of its useful life.

GREGORY  Ergonomic to the core

GREGORY  Style and value

GREGORY  Health and aged care



Ergonomic Office Seating Solutions

Gregory Commercial Furniture Pty Limited ABN 77 120 112 969

125-131 Cowpasture Road
Wetherill Park NSW 2164

Call: 13 ERGO or visit
www.gregoryaustralia.com.au

GREGORY
ergonomic to the core



GREGORY
ergonomic to the core



Adjusting your chair

Your chair is the most important feature of your workstation. Fit the chair to your body, not your body to your chair.

Sit normally on the chair and adjust the seat height so your thighs are approximately horizontal when your feet are flat on the floor.

Adjust the height of the backrest so that the lumbar support roll in the backrest of the chair is level with the lumbar region of your spine where your belt normally sits.

Adjust the angle of the backrest to ensure that your upper body is neither stretched back at an uncomfortable angle nor bent forward curving the spine.

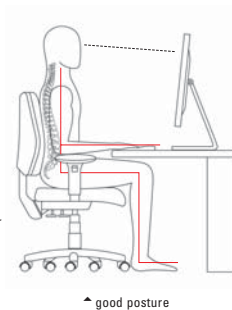
Height adjustable arms (if fitted) should be set to a level where it is possible to rest both forearms approximately horizontally on the rests without straining your shoulders downward or upwards.

Remember that throughout the day your body posture will change requiring adjustment of the chair to compensate.

If sitting for long periods of time move your feet and lower legs to prevent numbness.

Hard tyred castors are unsuitable for use on hard floors or firm chair mats in which case soft tyred castors should be used. Soft tyred castors are distinguishable by the tyre being a different colour from the body of the castor.

Foams fitted to this chair meet the requirements of the standard AS/NZS 4088.1



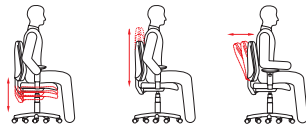
Terms of Warranty

Gregory Commercial Furniture Pty Limited warrants all products for a period of five (5) years under normal 50 hours, 5 days per week usage to be free from defects in material and workmanship. Gregory Commercial Furniture Pty Limited's liability under this warranty (and any warranty that is implied and can only be limited as permitted by law) is to repair or replace (at its discretion) any part or product covered by this (or any implied) warranty free of charge.

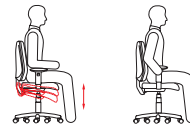
To the extent permitted by law, this warranty does not cover:

1. Normal wear and tear
2. Fabric (as this is normally specified by the customer). However, the fabric warranty provided by the supplier applies
3. Damage arising from abnormal use, or abuse
4. Products which have not been maintained as recommended by Gregory Commercial Furniture Pty Limited, or which have been modified
5. Any indirect or consequential loss
6. Transport charges to return the product to Gregory Commercial Furniture Pty Limited for repair or replacement.

This warranty applies only to the original purchase. All works carried out by a party under instructions from Gregory Commercial Furniture will be covered by the five year warranty on workmanship and repair. If the workmanship of the repair is deemed by Gregory Commercial Furniture to be faulty a new chair will be provided. To the extent permitted by law, all other warranties, express or implied, are excluded.



- › Adjust the seat height
- › Adjust the height of the backrest
- › Adjust the angle of the backrest



- › Adjust the angle of the seat
- › Adjust the armrest (if fitted)

ERGONOMOMIC CHAIRS

GREGORY
ergonomic to the core

