



Roxy Executive



Features

- Height Adjustable arms which can also be rotated
- Fully adjustable synchron mechanism which can be locked in any angle
- Back flexors are individually shaped to the human body to provide maximum support
- Black Mesh Back with Black Frame or White Frame
- Black or red upholstered seat
- Polished Alloy Base
- Matching Visitors Chairs
- 5 Years Warranty

Executive	Seat Height 430-545	Back Height 520	Seat Depth 465	Seat Width 480
Visitor	Seat Height 445	Overall Height 815	Seat Depth 440	Seat Width 440



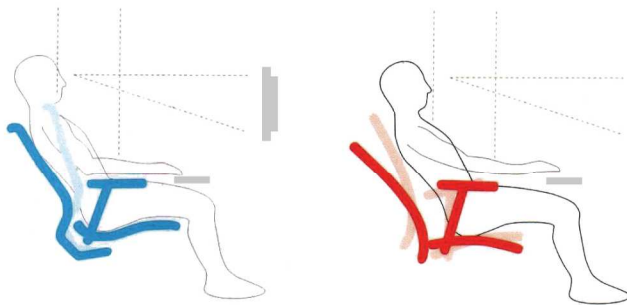
Life cycle assessment



Roxy global
Certified through the United Kingdom SGS.ISO9001

Roxy materials

Roxy contains up to 41% recycled materials. And because it weighs only 40 pounds, it uses fewer new materials than comparable chairs. It has no PVCs, solvents, or banned, restricted, harmful materials such as plated chrome or benzene.



Posture testing shows power mechanism allows us to recline without leaving our vision and reach zone, so we can lean back without moving away from our work.



Global warming

By reducing manufacturing and transportation emissions Roxy minimize the greenhouse gases that lead to an increase in global temperatures.



Acidification

Reduction in emissions, also helps reduce the acidity of rain.



Eutrophication

This is the loss of plants and animals in aquatic ecosystems due to loss of oxygen after algae blooms. Reducing pollution, such as nitrogen oxides, helps reduce these algae blooms.



Photochemical smog

VOCs (volatile organic compounds) are eliminated in Roxy manufacturing, helping to reduce this kind of air pollution.



Abiotic resource depletion

This is the depletion of non-renewable resources like metal and oil. Because Roxy is extremely lightweight, and because it is made with up to 41% recycled content, it uses far fewer raw materials than comparable chairs.



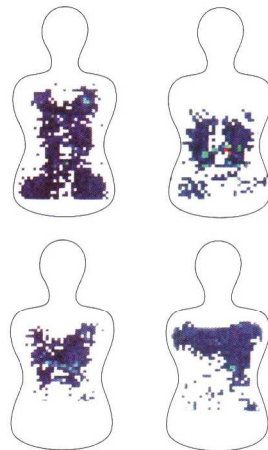
Waste

Easy to recycle, Roxy produces almost no waste. Low-waste packaging and efficient shipping reduce waste even more.



Toxic emissions

Roxy contains no mercury, PVCs, asbestos, solvents, CFCs, PBBs, methylene chloride, formaldehyde or HCFCs. Manufacturing produces no VOCs.



Profile back flexors provide dynamic, continuous support throughout each region of the back with no "Hot spots" or empty zones. Support is evenly distributed as we move in the chair.

Roxy Cantilever

