

# Pressure Mapping of Therapod Office Chairs

## Intro

The pressure mapping was carried out at the premises of Mobility Options, Miranda, Sydney NSW. Three office chairs with differing foam were pressure mapped to gain an indication of comparative performance.

For the pressure mapping the XSENSOR® X2 pressure mapping system with an X36 18"x18" sensing pad with 0.5" resolution was used. Total number of sensor is 1,296.

To ensure consistency the same person was used to provide the sampling data. The samples were taken with an able bodied male of height approx.183cm and weighing approximately 90kg aged unknown. For the purpose of this report he shall be referred to as X.

Sampling was initiated after X had been on the surface for 5 minutes to allow for the seats to conform and compress.

Samples were taken with the office chairs adjusted to the same height and back angles the same.

## Results

Below are images of the comparisons for the V-TEQ Seat, Body Form Seat and a 'Standard' Office seat without V-TEQ foam.

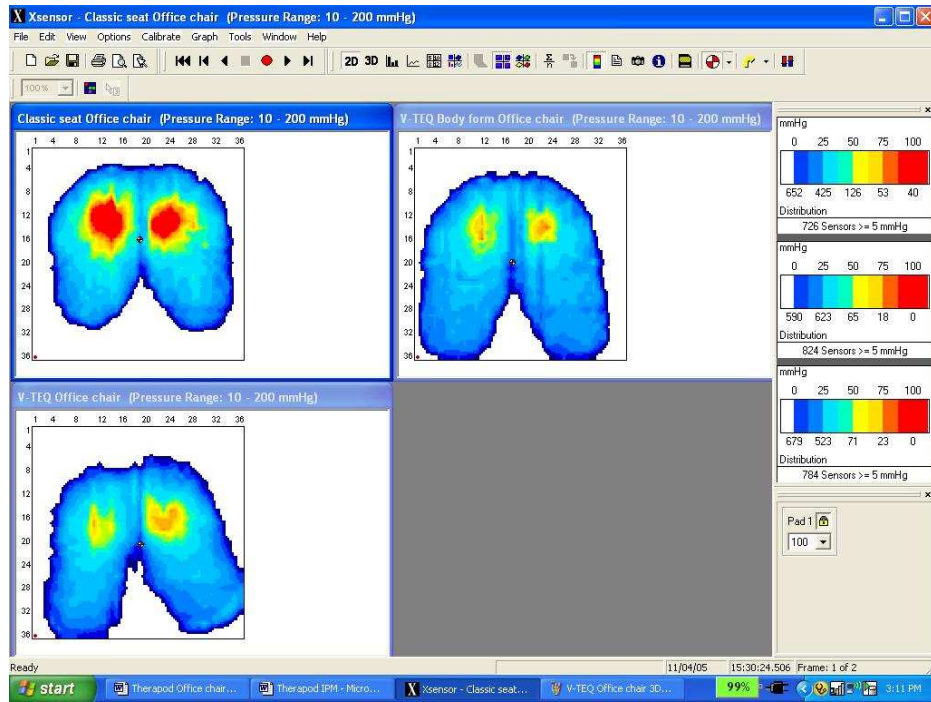
In summary the V-TEQ Office chair seat distributed weight more effectively, and thus reduced pressures. The Body Form seat performed better than the 'Standard' Office Chair seat. The table below shows peak pressure over the right and left ischial tuberosity for each office chair.

<b>Boney Prominence</b>	<b>V-TEQ Office Chair Seat</b>	<b>Body Form Office Chair Seat</b>	<b>'Standard' Office Chair seat</b>
Right IT	83mmHg	94mmHg	210mmHg
Left IT	89mmHg	97mmHg	184mmHg

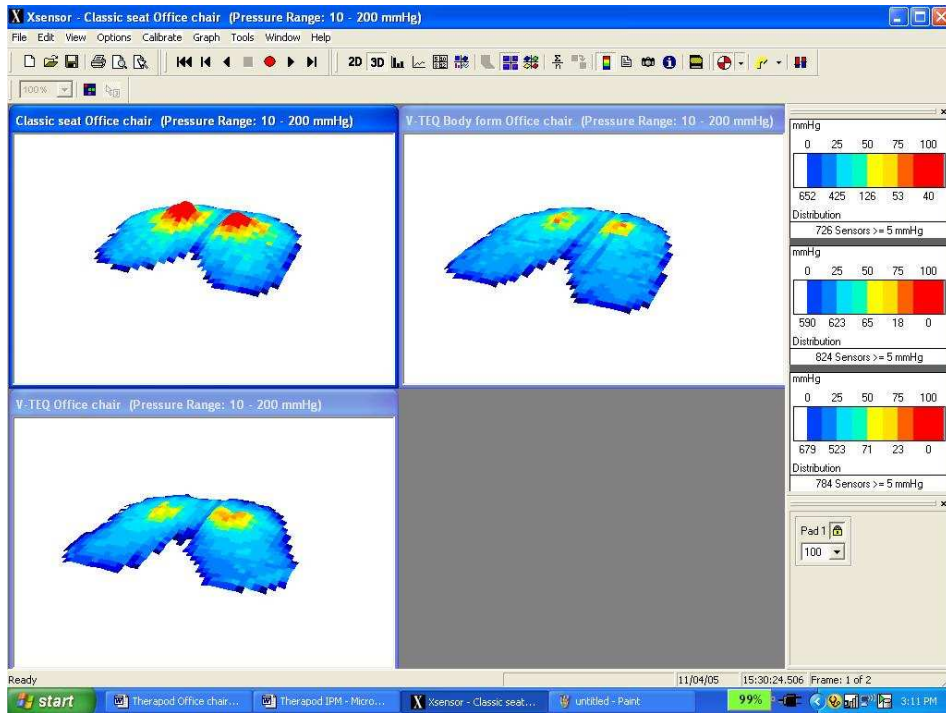
## Conclusion

The results of the pressure mapping show that the V-TEQ Office Chair was the most effective in reducing pressure. Both the V-TEQ and the Bodyform seats showed significantly better results than the 'Standard' Office Chair seat.

# IMAGES



Comparison of pressure mapping 2D – clockwise from top left ‘Standard’ Office Chair seat, Body Form Office Chair, V-TEQ Office Chair



Comparison of pressure mapping 2D – clockwise from top left ‘Standard’ Office Chair seat, Body Form Office Chair, V-TEQ Office Chair